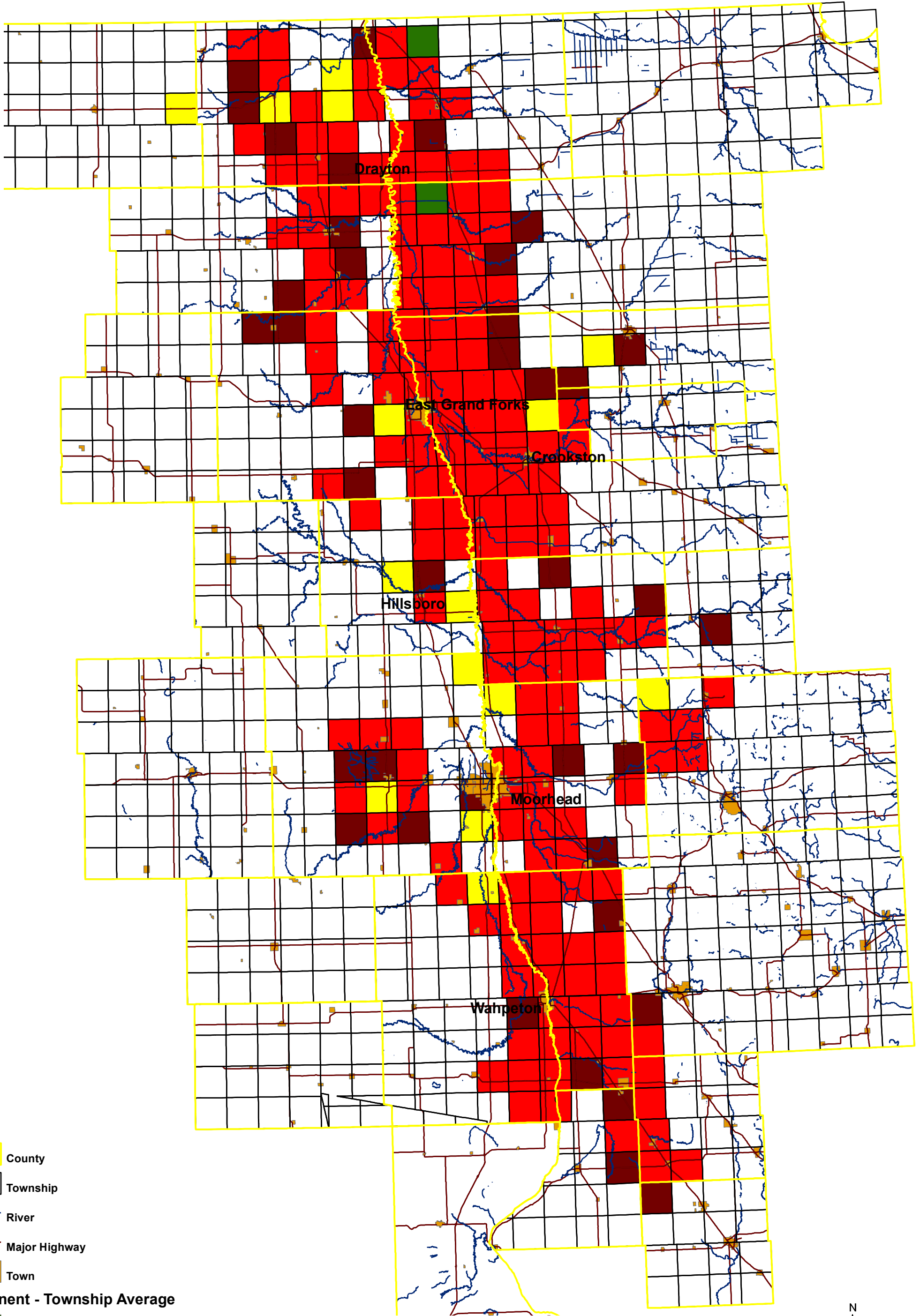


# Cercospora Sensitivity/Resistance - 2018

## Eminent EC-50



- County
- Township

- River
- Major Highway
- Town

**Eminent - Township Average**

- 0 - 0.1 (None)
- 0.1001 - 1.0 (Moderate)
- 1.0001 - 10.0 (High)
- > 10.0 (Very High)

Incidence of sensitivity and resistance are summarized by township

